

Cardinal Colorful & PANTONE® Perfect

This color selection represents a variety of the powder coatings Cardinal has as stock items in our warehouses across the United States. It is important to note that a large part of our business is custom formulation of powder and liquid coatings to specific criteria. If you cannot find the exact coating you would like, then please let us know. We would be delighted to build a product around your application.

Some projects require only a small amount of custom powder. To address this need, Cardinal developed a unique service called CardinalXpress to manufacture 50-pound batches of handcrafted, custom-designed powder. CardinalXpress powder can range from a full gloss to a 20% gloss system. Cardinal can also manufacture two gloss levels of fine texture in a custom color. We use exterior-durable, TGIC Polyester formulas that have proven to be some of the best powder to apply. CardinalXpress has a simple pricing structure to facilitate quick quotes and quick service. There simply is no reason to compromise your finish.

Cardinal is licensed by PANTONE® to accurately simulate both the PANTONE MATCHING SYSTEM® colors and the PANTONE Textile Color System® with our powder and liquid coatings. This can be done in batches as small as 50 pounds of powder or one gallon of liquid. Some bright colors will require a white base coat to create the brightness seen on the PANTONE Color Guides. Contact your Cardinal Technical Representative for more information.

Cardinal offers a full line of coatings to touch up blemishes on powder-coated products. Touch-up coatings come in aerosol cans containing either nitrocellulose lacquer or acrylic enamel. The acrylic enamel is available in 6-packs of stock Cardinal colors. All achievable colors can be mixed and matched. Most of the varicolored powders do not have a touch-up available. Cardinal offers a small touch-up bottle with a brush in the cap for quick

cover up. For projects that require the durability of powder, but cannot withstand a high baking temperature, we suggest a liquid polyurethane paint. Liquid coatings can be made to match powder-coated surfaces.

Important notes about our stock coatings:

- Exterior powders start with a T, C or P.
- Metallic exterior powders (T353-GR06, etc.) require a clear coat for exterior durability due to the effects of weathering on the aluminum flakes used to create the metallic appearance.
- H and E powders are not suitable for exterior use if you need color and gloss stability.
- Each powder has some special characteristics we would like to share with you. Please contact your local Cardinal Technical Representative for specific information before you start a new project.
- If your preferred finish is not shown, then please let us know. Many of Cardinal's coatings are customized for special applications and not shown here.



PANTONE® and other Pantone, Inc. trademarks are the property of Pantone, Inc.

These are only a few of the color possibilities from Cardinal. We accurately match any sample color that you provide. And, we are licensed to simulate the internationally-recognized PANTONE MATCHING SYSTEM® colors.

* To maintain the appearance of exterior metallic finishes a clear topcoat is recommended.

** It is suggested that these products be applied to interior products only.

The first letter of the product code refers to resin system:
C: Polyester, E: Epoxy, H: Hybrid, P: Polyurethane, T: Polyester T.G.I.C.

These color samples are representative only and will vary from the actual color depending on the computer monitor or printer used to view them. For an accurate color, gloss and texture sample, contact a Cardinal representative.

Southern California
Corporate Headquarters
1329 Potrero Avenue
South El Monte, CA 91733
tel 626.444.9274
fax 626.444.0382

Powder Coating Manufacturing
15010 Don Julian Road
City of Industry, CA 91746
tel 626.937.6767
fax 626.336.0410

Arizona
3816 East Superior Avenue
Phoenix, AZ 85040
tel 602.437.2401
fax 602.437.9251

Northern California
890 Commercial Street
San Jose, CA 95112
tel 408.452.8522
fax 408.452.0318

Colorado
1195 East 64th Avenue
Denver, CO 80229
tel 303.286.1876
fax 303.286.1878

Minnesota
21326 Heywood Avenue
Lakeville, MN 55044
tel 952.469.6021
fax 952.985.5052

Missouri
44 Worthington Access Drive
Maryland Heights, MO 63043
tel 314.878.3010
fax 314.878.0903

North Carolina
540 Vandever Street
High Point, NC 27260
tel 336.882.9493
fax 336.882.9494

Pennsylvania
4 Harmer Street
Warren, PA 16365
tel 814.723.0721
fax 814.723.1556

Texas
4606 Brass Way
Dallas, TX 75236
tel 214.333.9801
fax 214.333.9831

Washington State
19230 144th Avenue Northeast
Woodinville, WA 98072
tel 425.483.5665
fax 425.483.5401

Hong Kong
14-22 Wang Lung Street
Tsuen Wan, Hong Kong
tel 852.2410.8200
fax 852.2410.8208



Powder Coatings Without Limits



www.cardinalpaint.com

Technology/Innovation/Service/Performance

Additional metallic finishes are available. Please contact a Cardinal representative for a full list.

Acrylic aerosol touch-up cans with excellent exterior color and gloss retention, and fast dry time are available to match the majority of the colors appearing on this color guide, or can be custom matched to your specifications.



P009-RD02 Dark Red 90% Gloss
T009-RD03 Red 90% Gloss
T241-RD129 Red Fine Texture Semi-Gloss
T013-RD15 Red Hammer Semi-Gloss
T009-RD01 Red 90% Gloss



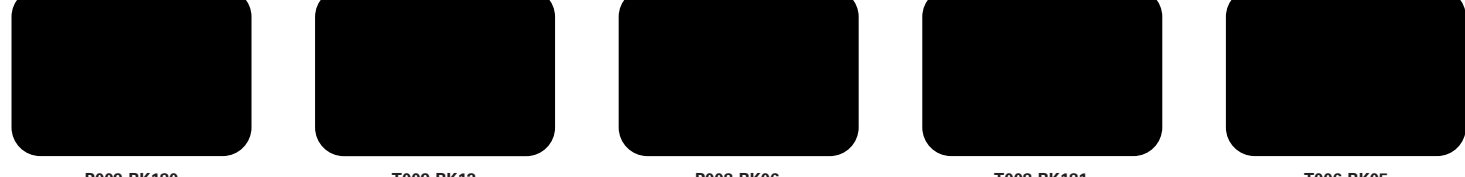
T009-OG26 International Orange 90% Gloss
T009-OG01 Safety Orange 90% Gloss
T009-YL71 Yellow 90% Gloss
T009-YL14 Yellow #13538 90% Gloss
T009-YL01 Yellow 90% Gloss



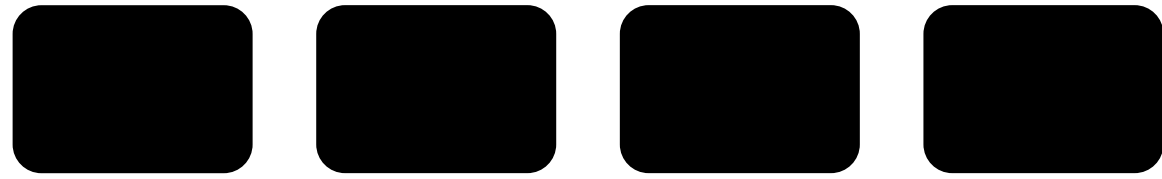
T007-GN16 Traffic Green 70% Gloss
T013-GN220 Green Hammer Semi-Gloss
C006-GN03 Green 60% Gloss
T007-GN13 D.O.T. Green #14066 70% Gloss
T008-BL20 Dark Blue 80% Gloss



T009-BL01 Blue 90% Gloss
C241-BL210 Blue Fine Texture Semi-Gloss
T009-BL05 Blue 90% Gloss
H308-BL03 Blue 80% Gloss**
T032-BL04 Blue Texture #25109 Semi-Gloss



P009-BK180 Black Ultra-Smooth 90% Gloss
T009-BK12 Black #17038 90% Gloss
P008-BK06 Black 80% Gloss
T008-BK181 Black 80% Gloss
T006-BK05 Black 60% Gloss



T005-BK78 Black 50% Gloss
P004-BK02 Black 40% Gloss
H302-BK46 Black 20% Gloss**
T002-BK08 Black #27038 20% Gloss



T001-BK120 Black 10% Gloss
E300-BK147 Flat Black**
E300-BK11 Flat Black 3% Gloss**



C241-BK01 Black Texture Semi-Gloss
T241-BK59 Black Texture Semi-Gloss
C241-BK110 Black Extra Fine Texture Semi-Gloss
C241-BK109 Black Fine Texture Semi-Gloss
E141-BK19 Black Texture Low-Gloss**



P141-BK03 Black Fine Texture Low-Gloss
C081-BK176 Black Wrinkle Semi-Gloss
E311-BK04 Black Hammer Low-Gloss**
T013-BK62 Black Hammer Semi-Gloss



T032-BR62 Brown Fine Texture Semi-Gloss
P004-BR23 Bronze 40% Gloss
P004-GR09 ANSI #49 Gray 40% Gloss
P004-GR16 ANSI #61 Gray 40% Gloss
H305-GR10 Light Gunmetal Gray 50% Gloss**



P003-GR01 Gray #26307 30% Gloss
H303-WH16 Antique White 30% Gloss**
P005-WH01 White #27875 50% Gloss
T002-WH08 White 20% Gloss



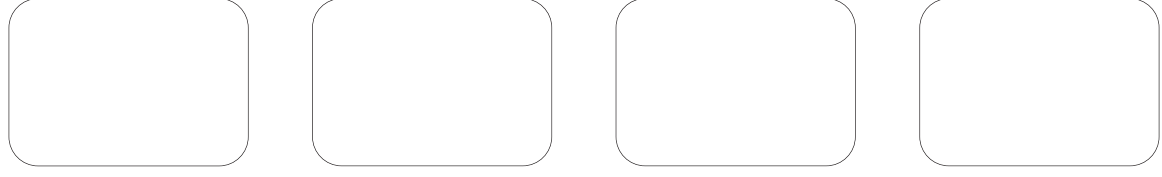
T008-GR736 Gray ANSI 61 80% Gloss
P008-GR21 RAL 7042 Gray 80% Gloss
T009-GR230 RAL 7035 Gray 90% Gloss
T009-WH13 White 90% Gloss
P009-WH14 White 90% Gloss



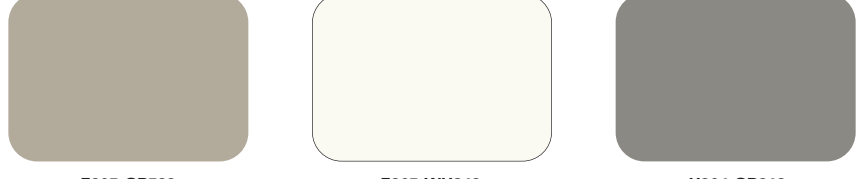
H309-WH27 Frost White 90% Gloss**
T032-BG03 Beige Texture Semi-Gloss
T032-WH15 White Texture Semi-Gloss
C031-WH120 White Texture Semi-Gloss



T009-BG16 Designer Beige 90% Gloss
P009-BG02 Beige 90% Gloss
T009-BG01 Almond 90% Gloss
H308-WH25 White 80% Gloss**



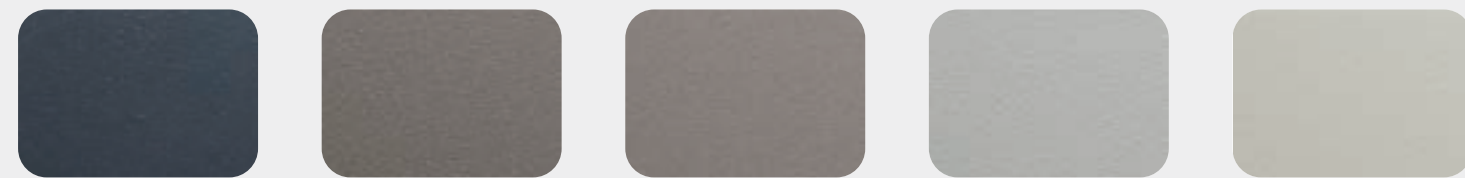
P009-WH04 White 90% Gloss
T009-WH11 White 90% Gloss
T009-WH12 Hi-Reflective White 90% Gloss
T007-WH121 White 70% Gloss



E305-GR533 Gray Primer 50% Gloss**
E305-WH243 White Primer 50% Gloss **
H304-GR312 Anti-Gassing Primer 40% Gloss**

If a clear topcoat finish is preferred
T209-CL01 90% Gloss Clear TGIC Polyester
T002-CL02 20% Gloss Clear TGIC Polyester
T032-CL11 Semi-Gloss Texture Clear TGIC Polyester
P001-CL15 Low-Gloss Smooth Clear Polyurethane

The samples on this card are representative only and vary slightly from actual gloss, color and texture.



C241-GR484 Dark Gray Fine Texture Semi-Gloss
C241-GR07 Gray Fine Texture Semi-Gloss
C241-GR305 Bay Gray Fine Texture Semi-Gloss
T243-GR522 Flint Gray Fine Texture Semi-Gloss
T241-GR11 Platinum Gray Fine Texture Semi-Gloss



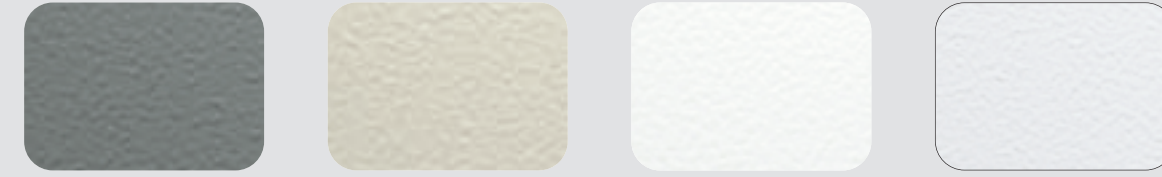
T031-WH06 Pearl White Fine Texture Semi-Gloss
T243-GR301 Quartz Gray Fine Texture Semi-Gloss
T241-GR142 Light Gray Fine Texture Semi-Gloss
T241-BG137 Beige Fine Texture Semi-Gloss



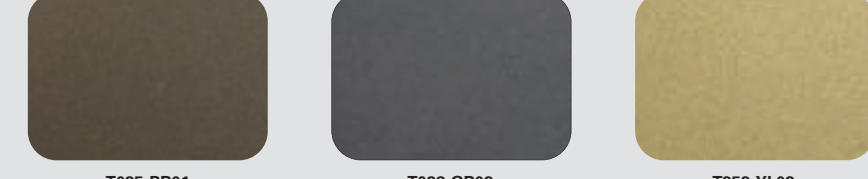
T375-BK07 Copper Vein Semi-Gloss*
T375-BK10 Gold Vein Semi-Gloss*
T375-BK26 Silver Vein Semi-Gloss*
T075-WH34 Black/White Vein Semi-Gloss



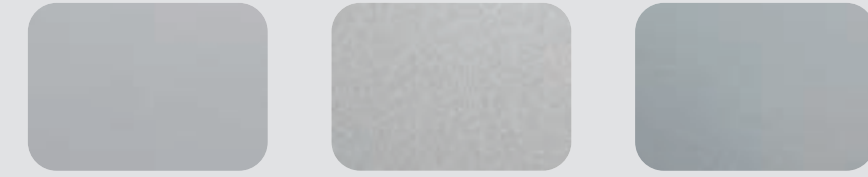
T064-BR24 Bronze Hammertone Semi-Gloss
T064-GR660 Gray Hammertone Semi-Gloss
T064-GR05 Silver Hammertone Semi-Gloss
T064-BL95 Blue Hammertone Semi-Gloss
T064-GN81 Green Hammertone Semi-Gloss



C013-GR08 Gray Hammer Semi-Gloss
T013-BG38 Beige Hammer Semi-Gloss
T012-WH260 White Hammer Semi-Gloss
T013-WH09 White Hammer Semi-Gloss



T025-BR01 Bronze Pearlescent 50% Gloss
T028-GR02 Steel Gray Pearlescent 80% Gloss
T353-YL02 Brass 30% Gloss*



T357-GR105 Silver Metallic 70% Gloss*
T353-GR06 Silver Metallic 30% Gloss*
T358-GR539 Chrome 80% Gloss*



T391-BG290 Metallic Bronze Semi-Gloss Texture*
T091-GR309 Mock Rock Texture Semi-Gloss
C291-GN20 Patina Texture Semi-Gloss
T091-GN57 Verdigris Texture Semi-Gloss
T091-BR47 Rust Texture Semi-Gloss

Computer Colors

Specialty Coatings